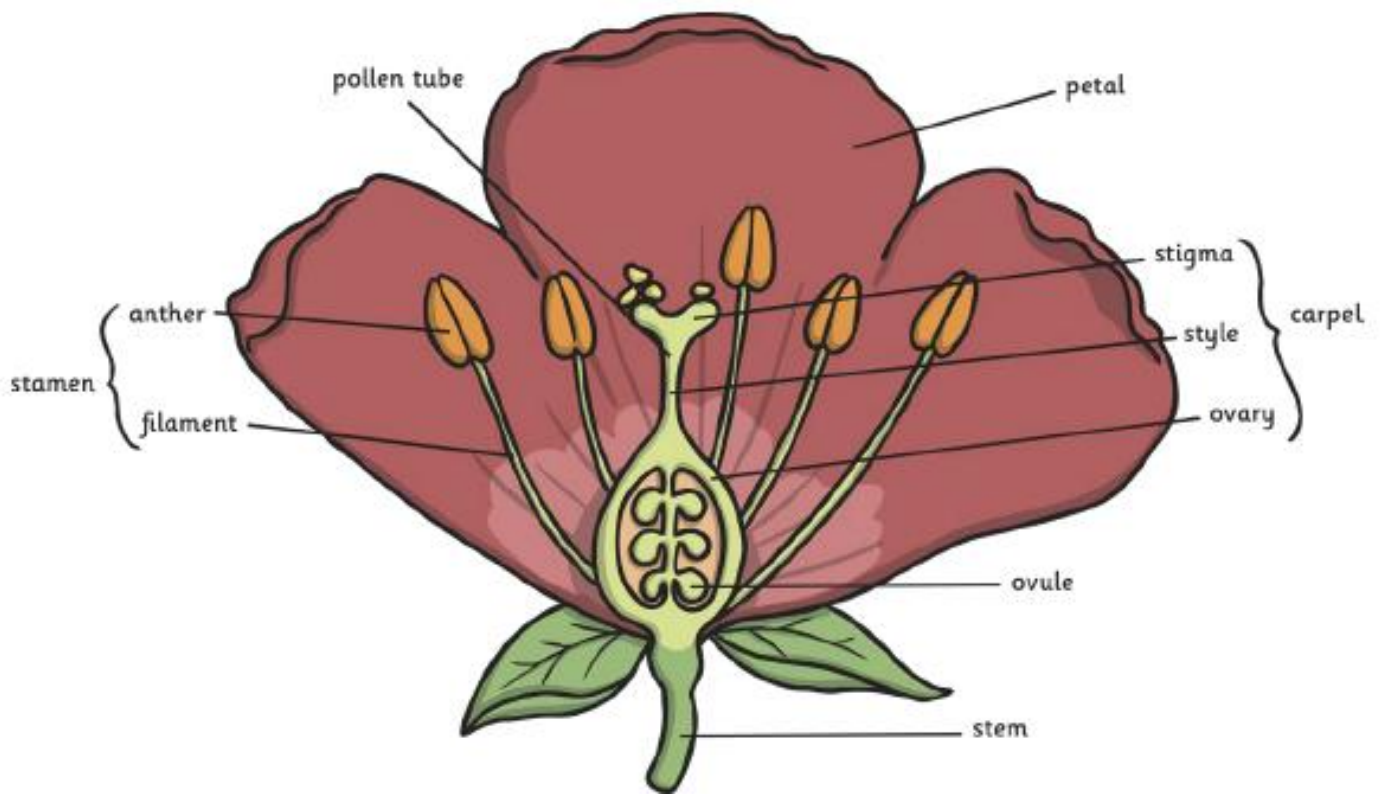


## TASK 1 ANSWERS



**Anther:** A male part of the flower. The anther makes the pollen, a fine yellow powder which contains the male gametes (sex cells).

**Ovule:** The female gamete (sex cell). If an ovule fuses with a grain of pollen, a new seed will form.

**Filament:** A male part of the flower. The filament holds up the anther. **Stem:** This holds up the plant and transports water to the leaves.

**Ovary:** A female part of the flower. The ovary contains the ovules.

**Stigma:** The stigma is a female part of the flower. It is sticky so it can catch grains of pollen easily.

**Style:** A female part of the flower. Pollen travels down the style to the ovary

**Petal:** Petals are often brightly coloured or sweetly scented to attract insects.

**Pollen tube:** This tube is formed to transport the male gametes from the pollen down the style to the ovary.

## TASK 2 ANSWERS

### Bronze

flowers pollinated by the wind	flowers pollinated by insects
wych elm timothy grass plantain	bindweed cherry dog rose
Statements: Have long, dangling anthers that get blown around easily. Have feathery stigmas to catch pollen. Pollen grains are very small so they blow around easily. Stigma hangs outside the flower so it can catch pollen grains.	Statements: Brightly coloured so they look attractive. Pollen is sticky so it attaches easily. Contain tasty nectar Have large petals for insects to land on. Have a strong scent so they smell attractive.

### Silver

flowers pollinated by the wind	flowers pollinated by insects
wych elm timothy grass plantain	bindweed cherry dog rose
Statements: Have long, dangling anthers that get blown around easily. Have feathery stigmas to catch pollen. Pollen grains are very small so they blow around easily. Stigma hangs outside the flower so it can catch pollen grains.	Statements: Brightly coloured so they look attractive. Pollen is sticky so it attaches easily. Contain tasty nectar Have large petals for insects to land on. Have a strong scent so they smell attractive.

## Gold

flowers pollinated by the wind	flowers pollinated by insects
wych elm timothy grass plantain	bindweed cherry dog rose
<p>Statements:</p> <p>Have long, dangling anthers that get blown around easily.</p> <p>Have feathery stigmas to catch pollen.</p> <p>Pollen grains are very small so they blow around easily.</p> <p>Stigma hangs outside the flower so it can catch pollen grains.</p>	<p>Statements:</p> <p>Brightly coloured so they look attractive.</p> <p>Pollen is sticky so it attaches easily.</p> <p>Contain tasty nectar</p> <p>Have large petals for insects to land on.</p> <p>Have a strong scent so they smell attractive.</p>